

ColorCast Acrylics

CC3X2-600M	CC3X2-620M	CC3X2-500M	CC3X2-550M	CC3X2-850M	CC3X2-200M	CC3X2-300M	CC3X2-400M	CC3X2-710M	CC3X2-330M	CC3X2-100M
CC3X2-600G	CC3X2-620G	CC3X2-500G	CC3X2-550G	CC3X2-850G	CC3X2-200G	CC3X2-300G	CC3X2-400G	CC3X2-710G	CC3X2-330G	CC3X2-100G
Red	Burgundy	Blue	Navy Blue	Almond	White	Grey	Black	Gold	Silver	Clear

ColorCast Acrylics have thickness variations that may present difficulties in applications where thickness tolerance is important (i.e. fitting into extrusions, thermoforming applications where walls must maintain uniform thickness and assembly of complex structures). Remember to check gauge when non-contact engraving takes place, and to periodically re-check focal lengths when laser engraving. In some cases, thickness variations may require the operator to make multiple passes during laser engraving.

LASERMAX

LM922-602	LM922-607	LM922-622	LM922-612	LM922-704	LM922-932	LM922-972	LM922-912	LM922-512	LM922-517	LM922-552	LM922-382
LM922-602	LM922-607	LM922-622	LM922-612	LM922-704	LM922-932	LM922-972	LM922-912	LM922-512	LM922-517	LM922-552	LM922-382
Crimson/White	Crimson/Yellow	Claret/White	Tangerine/White	Canary/Black	Kelley Green/White	Celadon Green/White	Evergreen/White	Sky Blue/White	Sky Blue/Yellow	Patriot Blue/White	China Blue/White

* LaserMax metals are not recommended for outdoor applications.

LaserMax metals are available with NoMark Plus finish by adding "O+" to the end of the item code.

LASERMARK

922-602	922-607	922-704	922-932	922-912	922-502	922-512	922-517	922-552	922-822	922-842	922-228
922-602	922-607	922-704	922-932	922-912	922-502	922-512	922-517	922-552	922-822	922-842	922-228
Red/White	Red/Yellow	Yellow/Black	Bright Green/White	Pine Green/White	Sapphire/White	Blue/White	Blue/Yellow	Navy Blue/White	Medium Brown/White	Dark Brown/White	Ivory/Brown

922-206	922-205	922-204	922-322	922-312	922-407	922-402	922-417	922-937	922-734	922-754	922-354
922-206	922-205	922-204	922-322	922-312	922-407	922-402	922-417	922-937	922-734	922-754	922-354
White/Red	White/Blue	White/Black	Light Grey/White	Grey/White	Black/Yellow	Black/White	Black/Gold	Verde/Gold	Br. Gold/Black	European Gold/Black	Br. Aluminum/Black

REVERSE LASERMARK

922-601	922-621	922-511	922-551	922-201	922-221	922-401	922-711	922-710	922-341	922-340
922-601	922-621	922-511	922-551	922-201	922-221	922-401	922-711	922-710	922-341	922-340
Matte/Red	Matte/Burgundy	Matte/Blue	Matte/Navy Blue	Matte/White	Matte/Ivory	Matte/Black	Matte/Smooth Gold	Matte/Smooth Gold	Matte/Smooth Silver	Matte/Smooth Silver

LaserLIGHTS

S61	S62	S63	S64*	S65	S66	S67	S68	S69	S73	S74*	S75
S61	S62	S63	S64*	S65	S66	S67	S68	S69	S73	S74*	S75
Black/White	White/Black	Br. Silver/Black	Br. Brass/Black	Black/Gold	Red/White	Blue/White	Yellow/Black	Br. Bronze/Black	Sm. Silver/Black	Sm. Gold/Black	Black/Silver

* Br. Brass/Black (S64-) and Sm. Gold/Black (S74-) are not recommended for outdoor applications.

Size Codes
12" x 24" sheets - 1224
4" x 50" rolls - 0405
12" x 50" rolls - 1205

Product Codes
A complete product code includes both the color and size code. (For example, the product code for a Black/White 12" x 24" roll is S61-1224.)

LASERmag

LM63-1224	LM64-1224*	LM65-1224
LM63-1224	LM64-1224*	LM65-1224
Br. Silver/Black	Br. Gold/Black	Black/Gold

* Br. Gold/Black (LM64-1224) is not recommended for outdoor applications, and is not UV stable.

FlexiBrass® & FlexiColor®

602-937	602-735	602-734	602-354	602-894	602-884	602-417	602-427	602-602	602-744	602-512	602-204
602-937	602-735	602-734	602-354	602-894	602-884	602-417	602-427	602-602	602-744	602-512	602-204
Verde/Brass	Br. Gold/Blue	Br. Gold/Black	Br. Aluminum/Black	Br. Copper/Black	Deep Bronze/Black	Matte Black/Brass	Glossy Black/Brass	Red/White	Yellow/Black	Blue/White	White/Black

Earthtones

ET3X2-602	ET3X2-802	ET3X2-823	ET3X2-801	ET3X2-902	ET3X2-595	ET3X2-591	ET3X2-413	ET3X2-431	ET3X2-206	ET3X2-204
ET3X2-602	ET3X2-802	ET3X2-823	ET3X2-801	ET3X2-902	ET3X2-595	ET3X2-591	ET3X2-413	ET3X2-431	ET3X2-206	ET3X2-204
Garnet/Ash	Canyon/Ash	Canyon/Cement	Matte/Canyon	Balsam/Ash	Driftwood/Alpine	Matte/Driftwood	Cinder/Clay	Matte/Cinder	Ash/Garnet	Ash/Cinder

HEAVY WEIGHTS

Thick Gauge Engravable Sheet Plastic

HW873-602 (1/2")	HW873-512 (1/2")	HW873-205 (1/2")	HW873-402 (1/2")	HW873-204 (1/2")	HW873-802 (1/2")	HW873-797 (1/2")	HW873-902 (1/2")
HW873-602 (1/2")	HW873-512 (1/2")	HW873-205 (1/2")	HW873-402 (1/2")	HW873-204 (1/2")	HW873-802 (1/2")	HW873-797 (1/2")	HW873-902 (1/2")
Red/White/Red	Blue/White/Blue	White/Blue/White	Black/White/Black	White/Black/White	Brown/White/Brown	Brown/White/Brown	Green/White/Green

GRANITES Deluxe

7X2-514M	7X2-517M	7X2-512P	7X2-510M	7X2-914M	7X2-917M	7X2-912M	7X2-910M	7X2-817M	7X2-818M	7X2-812M	7X2-810M
7X2-514M	7X2-517M	7X2-512P	7X2-510M	7X2-914M	7X2-917M	7X2-912M	7X2-910M	7X2-817M	7X2-818M	7X2-812M	7X2-810M
Glacier Blue/Black	Glacier Blue/Gold	Glacier Blue/White	Clear/Glacier Blue	Jade/Black	Jade/Gold	Jade/White	Clear/Jade	Sandstone/Gold	Sandstone/Dark Brown	Sandstone/White	Clear/Sandstone

Silks

022-602	022-205	022-206	022-204	022-912	022-512	022-402
022-602	022-205	022-206	022-204	022-912	022-512	022-402
Red/White	White/Blue	White/Red	White/Black	Pine Green/White	Blue/White	Black/White

Satins

1XX-602	1XX-604	1XX-607	1XX-622	1XX-612	1XX-614	1XX-704	1XX-706	1XX-705	1XX-932	1XX-902	1XX-912
1XX-602	1XX-604	1XX-607	1XX-622	1XX-612	1XX-614	1XX-704	1XX-706	1XX-705	1XX-932	1XX-902	1XX-912
Red/White	Red/Black	Red/Yellow	Burgundy/White	Orange/Black	Orange/Black	Yellow/Black	Yellow/Red	Yellow/Blue	Bright Green/White	Green/White	Pine Green/White

Mattes

2XX-602	2XX-622	2XX-612	2XX-744	2XX-932	2XX-972	2XX-912	2XX-552	2XX-502	2XX-512	2XX-562	2XX-382
2XX-602	2XX-622	2XX-612	2XX-744	2XX-932	2XX-972	2XX-912	2XX-552	2XX-502	2XX-512	2XX-562	2XX-382
Red/White	Burgundy/White	Orange/White	Yellow/Black	Bright Green/White	Celadon Green/White	Pine Green/White	Navy Blue/White	Sapphire/White	Light Blue/White	Light Blue/White	China Blue/White

Outdoor Weatherable Metals

522-766	522-765	522-774	522-366	522-365	522-384
522-766	522-765	522-774	522-366	522-365	522-384
Vintage Gold/Red	Vintage Gold/Blue	Vintage Gold/Black	Vintage Silver/Red	Vintage Silver/Blue	Vintage Silver/Black

Ultra-Mattes Front-Engravable

3XX-602	3XX-607	3XX-662	3XX-632	3XX-704	3XX-794	3XX-932	3XX-972	3XX-974	3XX-992	3XX-997	3XX-902
3XX-602	3XX-607	3XX-662	3XX-632	3XX-704	3XX-794	3XX-932	3XX-972	3XX-974	3XX-992	3XX-997	3XX-902
Red/White	Red/Yellow	Dusty Rose/White	Ruby/White	Yellow/Black	Safety Yellow/Black	Bright Green/White	Celadon Green/Celadon Green/Black	Hunter Green/Black	Hunter Green/White	Hunter Green/Gold	Black Forest Green/White

Ultra-Mattes Reverse-Engravable

3X2-601	3X2-661	3X2-631	3X2-651	3X2-701	3X2-911	3X2-931	3X2-991	3X2-901	3X2-311	3X2-921	3X2-591
3X2-601	3X2-661	3X2-631	3X2-651	3X2-701	3X2-911	3X2-931	3X2-991	3X2-901	3X2-311	3X2-921	3X2-591
Matte/Red	Matte/Dusty Rose	Matte/Ruby	Matte/Orange	Matte/Yellow	Matte/Bright Green	Matte/Celadon Green	Matte/Hunter Green	Matte/Forest Green	Matte/Sea Grey	Matte/Teal	Matte/Ocean Blue

Key

- Indoor Use
- Laserable
- Front-Engravable
- Available in 1/8"
- UV Stable
- Rotary-Engravable
- Reverse-Engravable
- Gloss Finish
- Outdoor Weatherable

For detailed explanations of these symbols and recommended use, please visit www.rowmark.com, click on the "Technical Help" button and select the "Common Engraving Industry Terms & Definitions." call 1-877-ROWMARK (outside the USA, call 419-429-3398) or email inquiries@rowmark.com.

Can't find exactly what you're looking for? We can build different combinations of cap and core in most product lines, as well as develop custom colors. Contact your authorized Rowmark distributor or speak with one of our customer service specialists at 1-800-243-2339 (outside the USA, call 419-429-3398).

To request a sample or promotional literature, please call 1-888-500-5527 (419-429-3160) or email samples@rowmark.com.

For technical assistance, call 1-877-ROWMARK (419-429-3398), visit www.rowmark.com or email inquiries@rowmark.com.

Textures

822-642	822-622	822-652	822-774	822-778	822-962	822-992	822-902	822-592	822-503	822-382	822-258
822-642	822-622	822-652	822-774	822-778	822-962	822-992	822-902	822-592	822-503	822-382	822-258
Pimento/White	Ruby/White	Tangerine/White	Acid Yellow/Black	Acid Yellow/Dark Brown	Jungle Green/White	Teal/White	Black Forest Green/White	Royal Blue/White	Sapphire/White	China Blue/White	Bermuda Tan/Dark Brown

822-854	822-892	822-246	822-205	822-244A	822-302	822-374	822-422
822-854	822-892	822-246	822-205	822-244A	822-302	822-374	822-422
Desert Sand/Black	Coffee Bean/White	White/Red	Winter White/Blue	Winter White/Black	Ash Grey/White	Ash Grey/Black	Coal Black/White

ADA Alternative

3X1-601	3X1-602	3X1-823	3X1-701	3X1-901	3X1-902	3X1-903	3X1-509	3X1-501	3X1-504	3X1-502	3X1-302
3X1-601	3X1-602	3X1-823	3X1-701	3X1-901	3X1-902	3X1-903	3X1-509	3X1-501	3X1-504	3X1-502	3X1-302
Red	Burgundy	Canyon	Yellow	Bright Green	Pine Green	Black Forest Green	Bahama Blue	Blue	Air Force Blue	Marine Blue	China Blue

Lacquers

4XX-602	4XX-607	4XX-632	4XX-704	4XX-794	4XX-932	4XX-972	4XX-902	4XX-962	4XX-512	4XX-517	4XX-562
4XX-602	4XX-607	4XX-632	4XX-704	4XX-794	4XX-932	4XX-972	4XX-902	4XX-962	4XX-512	4XX-517	4XX-562
Red/White	Red/Yellow	White/White	Yellow/Black	Safety Yellow/Black	Bright Green/White	Celadon Green/White	Black Forest Green/White	Teal/White	White/White	Blue/White	Sapphire/White

Slickers

4X2-600	4X2-630	4X2-700	4X2-900	4X2-930	4X2-920	4X2-910	4X2-510	4X2-560	4X2-540	4X2-380	4X2-840
4X2-600	4X2-630	4X2-700	4X2-900	4X2-930	4X2-920	4X2-910	4X2-510	4X2-560	4X2-540	4X2-380	4X2-840
Clear/Red	Clear/Ruby	Clear/Yellow	Clear/Bright Green	Clear/Celadon Green	Clear/Forest Green	Clear/Teal	Clear/Blue	Clear/Sapphire	Clear/Blueberry	Clear/China Blue	Clear/Dark Brown

NoMark Plus & Standard Metals

5X2-8720+	5X2-872	5X2-8780+	5X2-878	5X2-8740+	5X2-874	5X2-8840+	5X2-884	5X2-7340+	5X2-734	5X2-7540+	5X2-754	5X2-7140+	5X2-714	5X2-3540+	5X2-354	5X2-3340+	5X2-334	5X2-3440+	5X2-344
5X2-8720+	5X2-872	5X2-8780+	5X2-878	5X2-8740+	5X2-874	5X2-8840+	5X2-884	5X2-7340+	5X2-734	5X2-7540+	5X2-754	5X2-7140+	5X2-714	5X2-3540+	5X2-354	5X2-3340+	5X2-334	5X2-3440+	5X2-344
Br. Bronze/White	Br. Bronze/White	Br. Bronze/White	Br. Bronze/White	Br. Bronze/Black	Br. Bronze/Black	Br. Bronze/Black	Br. Bronze/Black	Br. Gold/Black	Br. Gold/Black	European Gold/Black	European Gold/Black	Smooth Gold/Black	Smooth Gold/Black	Br. Alum./Black	Br. Alum./Black	Br. Silver/Black	Br. Silver/Black	Smooth Silver/Black	Smooth Silver/Black

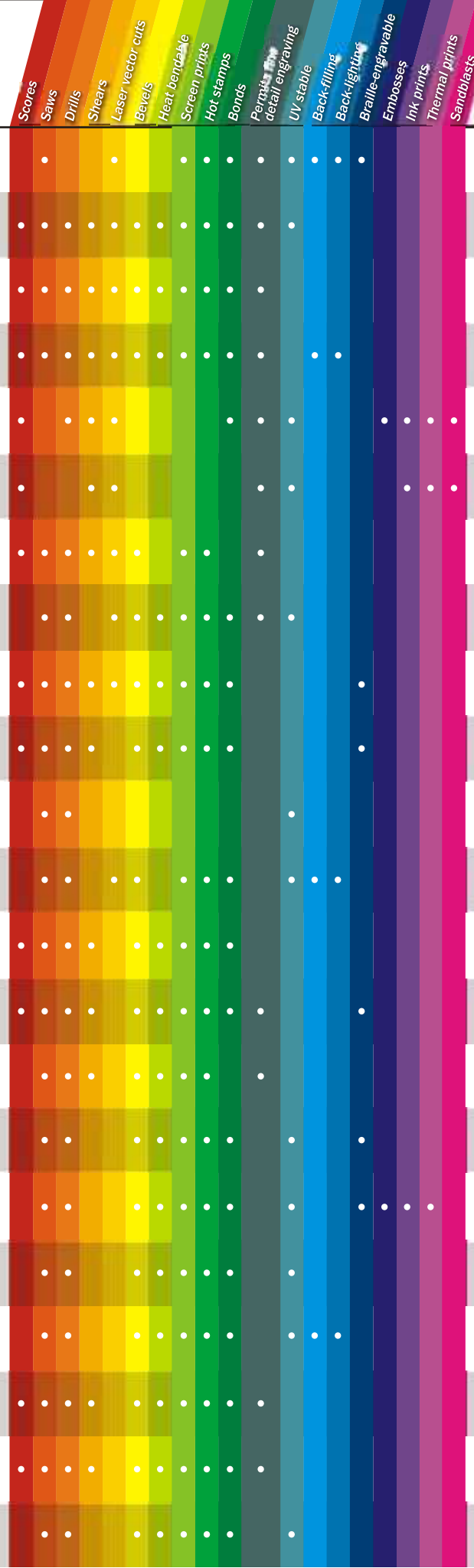
O+ Indicates NoMark Plus hard coat.

Terms & Conditions of Sale...

Rowmark's warranty is limited to replacement of product only, and such warranty does not extend to the costs of any repeat labor or incidental costs. LIMITED WARRANTY, WARRANTY DISCLAIMERS AND LIMITATIONS OF REMEDIES AND LIABILITIES: Except as set forth above, Seller makes NO OTHER WARRANTIES concerning the products whatsoever. SELLER DISCLAIMS AND EXCLUDES ALL OTHER EXPRESS

Product Specifications

Name	Material	Finish	Sheet Size	Thickness 2-ply	Thickness 3-ply	Engraving Method	Cutting Depth	Usage
ColorCast Acrylics	Cell cast acrylic	Matte non-glare Gloss	24" x 48" (610 x 1219mm) +0, -.125"	1/8" (3.2mm) Use CC342 as first three digits in item code. .236" (6.0mm) Use CC352 as first three digits in item code.		Laser Router Rotating carbide	.003" (.08mm)	Interior signage, Exterior signage
LASER MAX	Microsurfaced impact acrylic	Matte non-glare Brushed metal	24" x 49" (610 x 1245mm)	1/16" (1.6mm)		Laser Rotating carbide	.003" (.08mm)	Interior signage, Exterior signage, Personal identification
LASER MARK	Microsurfaced impact acrylic	Matte non-glare Gloss Brushed metal Patterned	24" x 49" (610 x 1245mm)	.052" (1.3mm) .060" (1.52mm)		Laser Rotating carbide	.003" (.08mm)	Interior signage, Personal identification
REVERSE LASER MARK	Microsurfaced impact acrylic for reverse-engraving	Matte non-glare	24" x 48 3/4" (610 x 1238mm)	.052" (1.3mm)		Laser Rotating carbide	.003" (.08mm)	Interior signage, Personal identification
LaserLIGHTS	Microsurfaced pre-adhesive plastic	Gloss Brushed metal	10-pack 12" x 24" sheets 4" x 50' rolls 12" x 50' rolls	.004" (.10mm) Backed with a .001" (.03mm) acrylic pressure sensitive adhesive.		Laser Rotating carbide Cuts with a laser engraver or plotter	.002" (.05mm) For engraving .006" (.15mm) For cutting	Personal identification, Industrial, Automotive & electronic labeling, Recreational applications
LASERmag	Flexible magnetic material	Gloss Brushed metal	10-pack 12" x 24" sheets	.020" (.51mm)		Laser Not recommended for rotary engraving.		Promotional magnets, Repositionable name plates, Vehicle graphics
FlexiBrass® & FlexiColor®	Microsurfaced impact acrylic Available with or without adhesive.	Matte non-glare Gloss Brushed metal	24" x 48 3/4" (610 x 1238mm)	.020" (0.5mm)		Laser Rotating carbide Burnish	.003" (.08mm)	Interior signage, Trophies, awards & plaques
Textures	Co-extruded impact acrylic	Textured	24" x 49" (610 x 1245mm)	1/16" (1.6mm) 1/8" (3.2mm)		Laser Rotating carbide	.007" (.18mm) Cutting depth on Acid Yellow is .010" (.25mm).	Interior signage, Exterior signage, Personal identification
ADA Alternative®	Single-ply modified acrylic Available with or without adhesive.	Matte non-glare	24" x 48 3/4" (610 x 1238mm)	1/32" (0.8mm) Use 311 as first three digits in item code. .040" (1.0mm) Use 391 as first three digits in item code. 1/16" (1.6mm) Use 321 as first three digits in item code. 1/8" (3.2mm) Use 341 as first three digits in item code.		Laser Rotating carbide	1/4" round .020" tip at 20°-25° angle	Interior signage, ADA compliant
Earthtones	Laminated impact acrylic for front and reverse-engraving	Matte non-glare	24" x 48 3/4" (610 x 1238mm)	1/32" (0.8mm) Use ET312 as first three digits in item code. 1/16" (1.6mm) Use ET322 as first three digits in item code. .114" (2.9mm) Use ET342 as first three digits in item code.		Rotating carbide	.012" (.30mm)	Interior signage, Personal identification
HEAVY WEIGHTS Thick Gauge Engravable Sheet Plastic	High-density polyethylene	Textured	24" x 48" (610 x 1219mm)		1/4" (6.35mm) 1/2" (12.7mm)	Router Rotating carbide	1/4" = .030" 1/2" = .060"	Architectural, outdoor & recreational signage
GRANITES Deluxe	Laminated impact acrylic	Matte non-glare Polished	24" x 49" (610 x 1245mm)	1/16" (1.6mm) Use 722 as first three digits in item code. 1/8" (3.2mm) Use 742 as first three digits in item code.		Router Rotating carbide Can be laser engraved, but its thick cap requires several passes.	.038" (.97mm)	Exterior signage, Interior signage
Satins	Acrylic cap, ABS core	Brushed	24" x 48 3/4" (610 x 1238mm)	1/32" (0.8mm) Use 112 as first three digits in item code. 1/16" (1.6mm) Use 122 as first three digits in item code. 3/32" (2.4mm) Use 132 as first three digits in item code.	1/16" (1.6mm) Use 123 as first three digits in item code. 1/8" (3.2mm) Use 143 as first three digits in item code.	Rotating carbide	.012" (.30mm)	Interior signage, Personal identification
Mattes	Microsurfaced ABS	Matte non-glare	24" x 49" (610 x 1245mm)	1/32" (0.8mm) Use 212 as first three digits in item code. 1/16" (1.6mm) Use 222 as first three digits in item code. 3/32" (2.4mm) Use 232 as first three digits in item code.	1/16" (1.6mm) Use 223 as first three digits in item code. 1/8" (3.2mm) Use 243 as first three digits in item code.	Rotating carbide	.003" (.08mm)	Interior signage, Personal identification
Silks	Laminated ABS	Matte non-glare	24" x 48 3/4" (610 x 1238mm)	1/16" (1.6mm)		Rotating carbide	.007" (.18mm)	Interior signage, Personal identification
Ultra-Mattes Front-Engravable	Laminated impact acrylic	Matte non-glare	24" x 48 3/4" (610 x 1238mm)	1/16" (1.6mm) Use 322 as first three digits in item code. 1/8" (3.2mm) Use 342 as first three digits in item code.	1/16" (1.6mm) Use 323 as first three digits in item code. 1/8" (3.2mm) Use 343 as first three digits in item code.	Rotating carbide	.012" (.30mm)	Interior signage, Exterior signage, ADA compliant Personal identification
Ultra-Mattes Reverse-Engravable	Laminated impact acrylic for reverse-engraving	Matte non-glare	24" x 48 3/4" (610 x 1238mm)	1/32" (0.8mm) Use 312 as first three digits in item code. 1/16" (1.6mm) Use 322 as first three digits in item code. 1/8" (3.2mm) Use 342 as first three digits in item code.		Rotating carbide	.012" (.30mm)	Interior signage, Exterior signage, ADA compliant Personal identification
Lacquers	Laminated impact acrylic	Gloss	24" x 48 3/4" (610 x 1238mm)	1/16" (1.6mm) Use 422 as first three digits in item code. 1/8" (3.2mm) Use 442 as first three digits in item code.	1/16" (1.6mm) Use 423 as first three digits in item code. 1/8" (3.2mm) Use 443 as first three digits in item code.	Rotating carbide	.012" (.30mm)	Interior signage, Exterior signage, Personal identification
Slickers	Laminated impact acrylic for reverse-engraving	Gloss	24" x 48 3/4" (610 x 1238mm)	1/32" (0.8mm) Use 412 as first three digits in item code. 1/16" (1.6mm) Use 422 as first three digits in item code. 1/8" (3.2mm) Use 442 as first three digits in item code.		Rotating carbide	.012" (.30mm)	Interior signage, Exterior signage, Personal identification
NoMark^{Plus}	Microsurfaced ABS	Brushed metal Shiny metal	24" x 49" (610 x 1245mm)	1/16" (1.6mm) Use 522 as first three digits in item code. 3/32" (2.4mm) Use 532 as first three digits in item code. 1/8" (3.2mm) Use 542 as first three digits in item code.		Rotating carbide	.003" (.08mm)	Interior signage, Personal identification
Standard Metals	Microsurfaced ABS	Brushed metal Shiny metal	24" x 49" (610 x 1245mm)	1/32" (0.8mm) Use 512 as first three digits in item code. 1/16" (1.6mm) Use 522 as first three digits in item code. 3/32" (2.4mm) Use 532 as first three digits in item code. 1/8" (3.2mm) Use 542 as first three digits in item code.		Rotating carbide	.003" (.08mm)	Interior signage, Personal identification
Outdoor Weatherable Metals	Laminated impact acrylic	Brushed	24" x 48 3/4" (610 x 1238mm)	1/16" (1.6mm) 1/8" (3.2mm)		Rotating carbide	.012" (.30mm)	Interior signage, Exterior signage, Personal identification



Color Chart Materials for Engravers & Sign Makers ISO 9001:2000



Paper or Plastic?

It's really a simple choice. The quality of your work tells the world who you are. Are you crinkled, temporary and off-center? Or are you polished, sturdy and professional? Tell them you mean business. Tell them you care about your work. Tell them who you are.

Rowmark®
Great people. Great plastic.
CUSTOM FABRICATION BY:
CLASSIC DESIGN AWARDS, INC
6128 LINCOLN AVENUE - MORTON GROVE, IL 60053
PHONE: (847)470-0855 · FAX: (847)470-0857
e-mail: classic2@sbcglobal.net
WWW.CLASSICDESIGNAWARDS.COM



1/05
\$.80