



CIDA SPECIAL FONTS - SYMBOLS - ORNAMENTALS

STENCIL GOTHIC

A B C D E F G H I J K L M N ()
P (Q R S T U V W X Y Z / ? . + : @
1 2 3 4 5 6 7 8 9 () = - * : (! " & ')

FRACTIONS

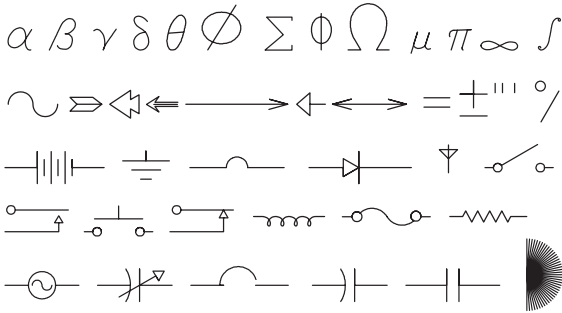
1¹/₁ 2²/₂ 3³/₃ 4⁴/₄ 5⁵/₅
6⁶/₆ 7⁷/₇ 8⁸/₈ 9⁹/₉ 0⁰/₀
/ - + x ÷ =

FRANKLIN GOTHIC

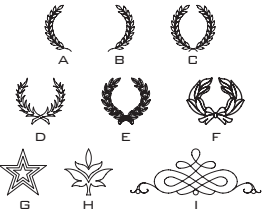
(ENGRAVING IN PLASTIC LEAVES RAISED LETTERS)

A B C D E F G H I J K L M N O P Q R S T U V
W X Y Z 0 1 2 3 4 5 6 7 8 9 & [] + - , ' "

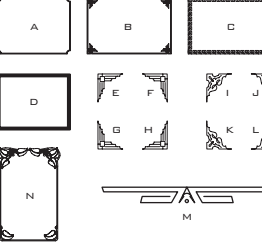
ENGINEERING SYMBOLS (DAHLGREN)



WREATHS (XENETECH)



BORDERS (XENETECH)



MISCELLANEOUS ORNAMENTALS



3 LINE HEBREW

א ב ג ד ה ו ז ח ט י כ ל מ נ ס ע פ צ כף קנב נש
A B C D E F G H I J K L M N O P R S T U V W X Y Z m p
(CONVERSION LETTERS)

MONOGRAMS

We can create a monogram using any one of our standard fonts (see reverse side), by making the center initial (initial of last name) larger, or however you see fit!

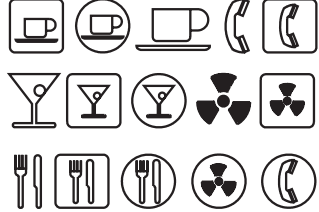
CIRCLE MONOGRAM



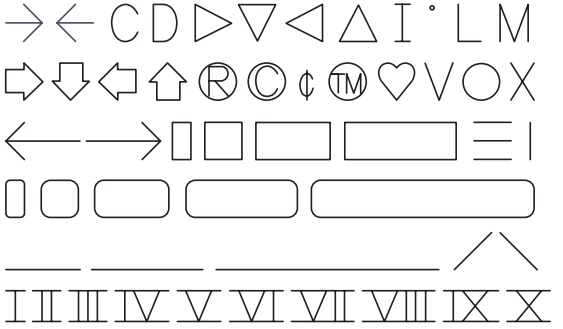
INTERNATIONAL SYMBOLS A (DAHLGREN)



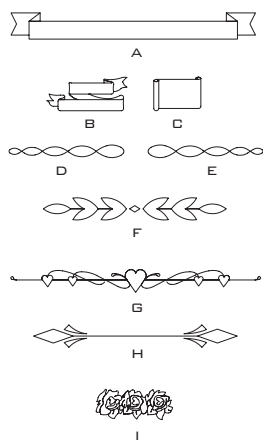
INTERNATIONAL SYMBOLS B (DAHLGREN)



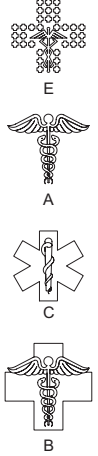
UTILITY (DAHLGREN)



RIBBONS



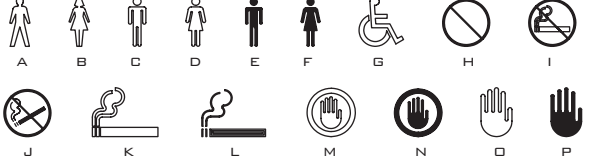
CADUCEUS



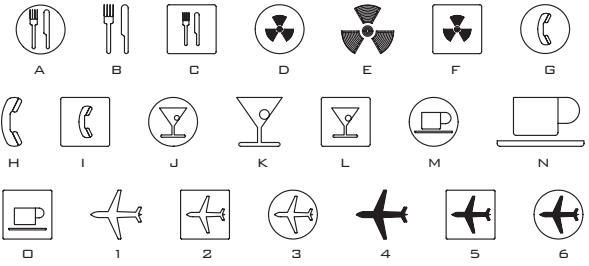
ELEVATOR & FIRE SYMBOLS (XENETECH)



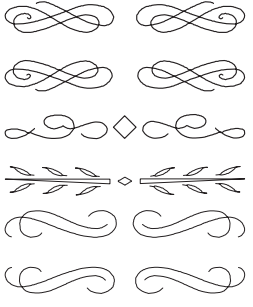
INTERNATIONAL SYMBOLS A (XENETECH)



INTERNATIONAL SYMBOLS B (XENETECH)



ORNAMENTAL 1 (DAHLGREN)



ORNAMENTAL 2 (DAHLGREN)

